

# THE NEW STANDARD FOR LOGISTICS

## Hanwha Vision Logistics Solution

A video-based analytics solution for tracking parcels, safety management, and integrated control.

### Barcode Reader (BCR) Integrated Camera

One camera for barcode scanning and high-resolution video, improving parcel management.

### Dock Safety / Management

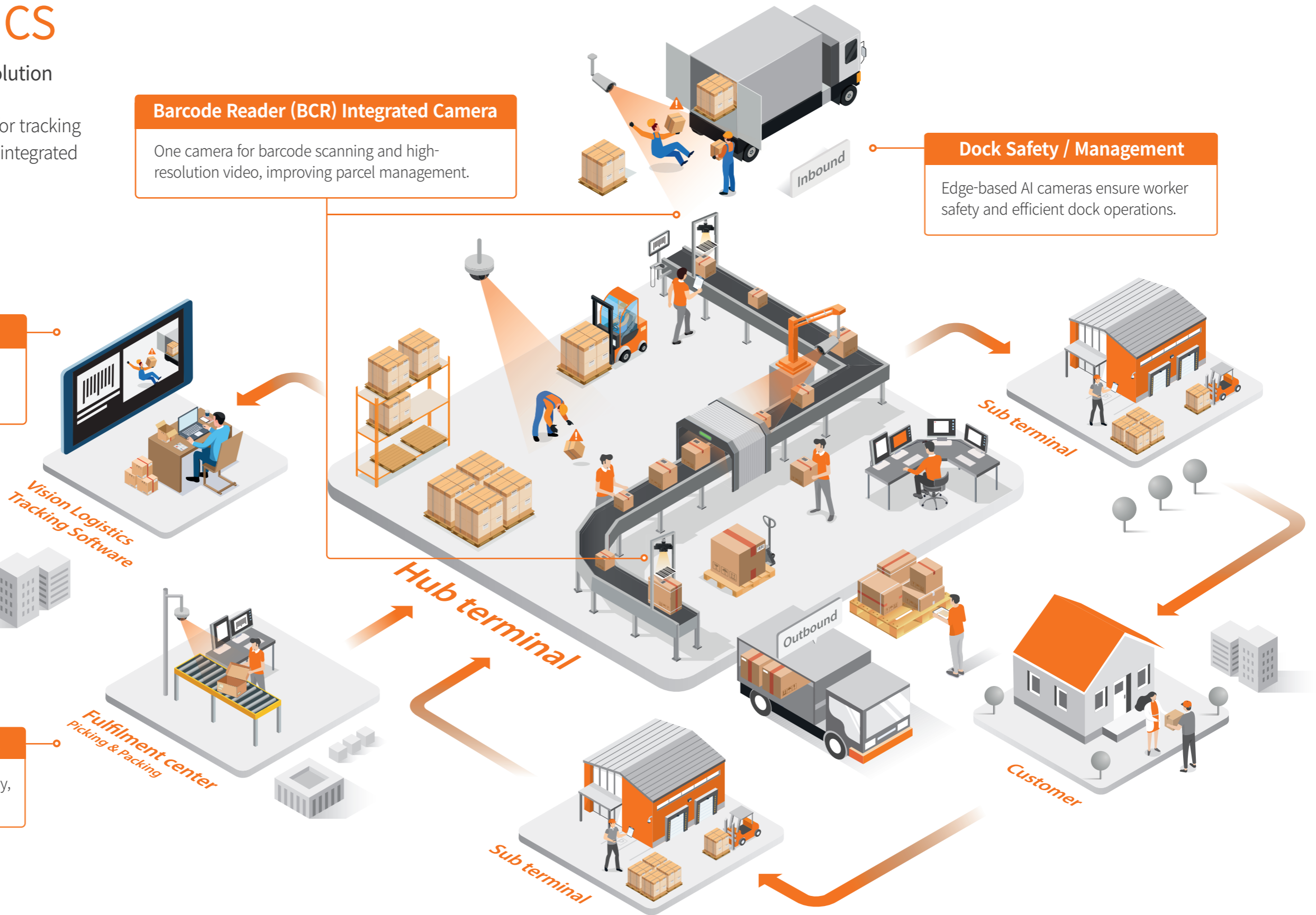
Edge-based AI cameras ensure worker safety and efficient dock operations.

### Integrated Control

Industry-leading surveillance system that fuses events and videos for full overview.

### Packing Video Management

By matching videos with work history, claims can be easily investigated.



# BCR (Barcode Reader) & Video surveillance

Leveraging video and barcode reading solutions for end-to-end parcel management and logistics. Offers end-to-end parcel management using efficient video analytics.

## TNS-9050IBC Dual Lens BCR Camera

Barcodes and video are provided in real-time from one camera

## Barcode reading cameras, fixed mount

Accurate barcode recognition, even on high-speed conveyors.

Logistics automation offers greater reliability and reduced mis-delivery as well as increased parcel capacity and optimized resources. Combining barcode data and videos provides efficient parcel tracking and management.



## Specifications

Image sensors	Barcode : Global Shutter Mono 1" COMS, 4K(4096 * 2160) Max 20fps CCTV Monitoring : Global Shutter Color 1" COMS, 4K(4096 * 2160) Max 20fps
Lens	25mm 4K LENS(MONO/COLOR), C mount, 16mm/35mm/50mm Switchable
LED Light	Detachable LED module(White LED 32EA), External LEDs available
Analytics (Wise AI)	Barcode recognition - Barcode type: 1D Code, Code128 / Codabar / ITF(Interleaved 2 of 5)
Power	24VDC / Max 28.6W(LED On), Typical 13.7W(LED Off)

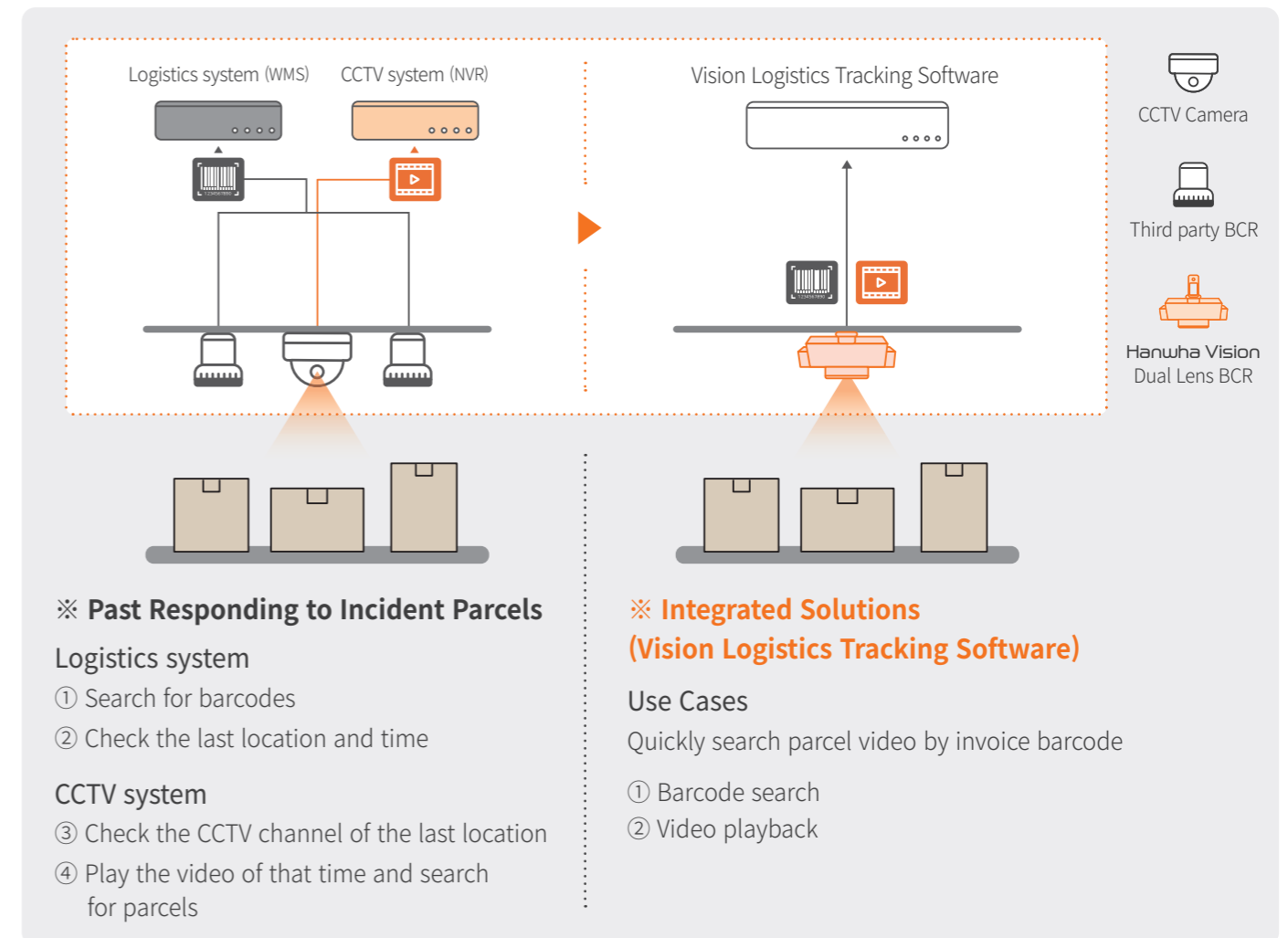
## Integration with High-resolution video

Combining video surveillance with barcode-based logistics systems enables users to track the entire logistics process, preventing parcel incidents such as loss, damage, etc.

- Scan barcodes from a single camera and record high-resolution video at the same time.
- With high-resolution videos and precise time synchronization, verify the status and journey of parcels.



- Manage the movement history and footage of parcels via Vision Logistics Tracking Software.



# Packing Video Management

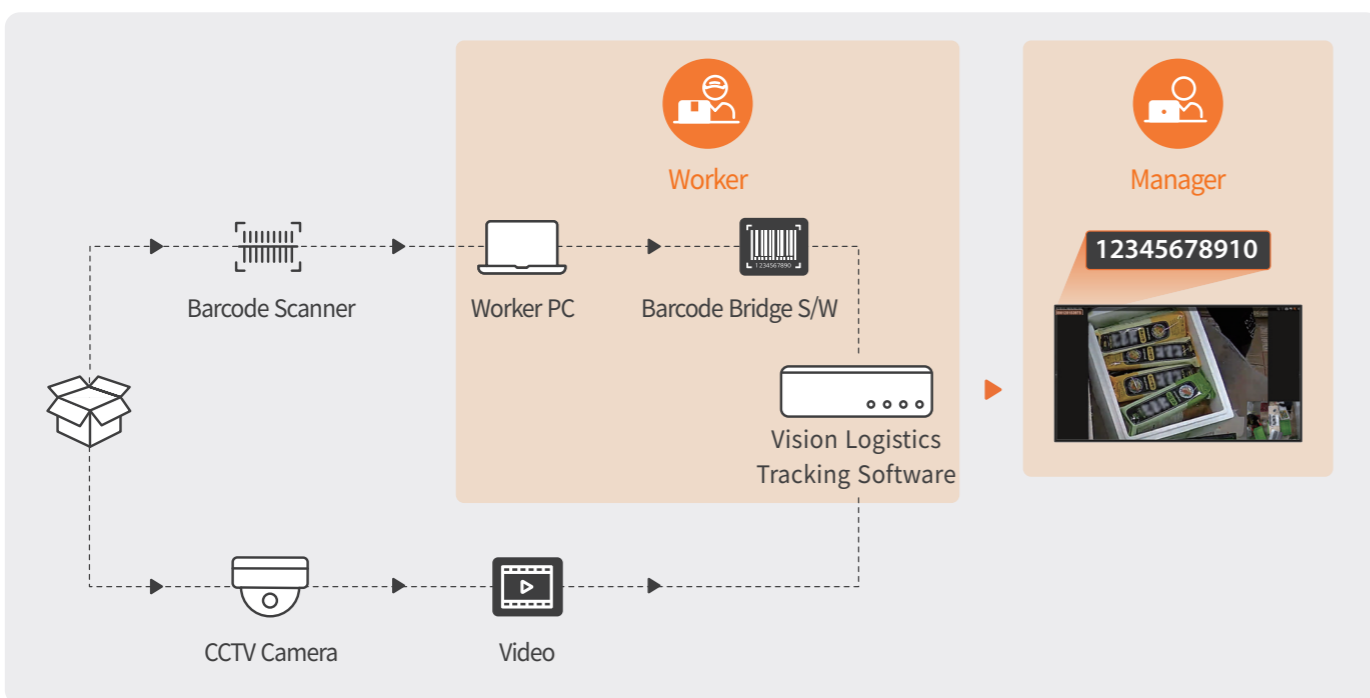
The solution helps prevent packing errors and ensures video evidence of each order if customer claims arise.



## Packing Solution

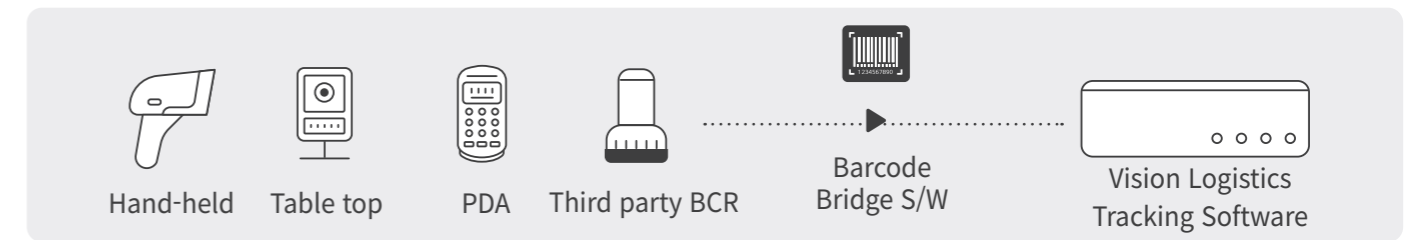
When incidents such as errors, omissions, or damages occur during the packing process, it enables detailed review of the incident.

- Integrated barcode recognition and video systems to manage worker status and improve customer claim response times in fulfillment centers (e-commerce, 3PL, etc.).
- Risk-free solution that requires no modifications or configuration changes to existing software.
- The Barcode Bridge S/W transfers barcode data to the video management system (Vision Logistics Tracking Software).

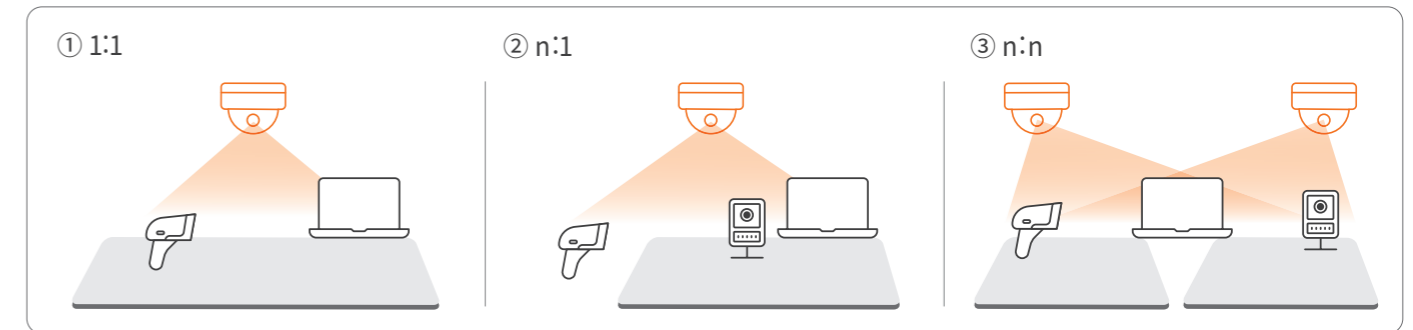


## System configuration

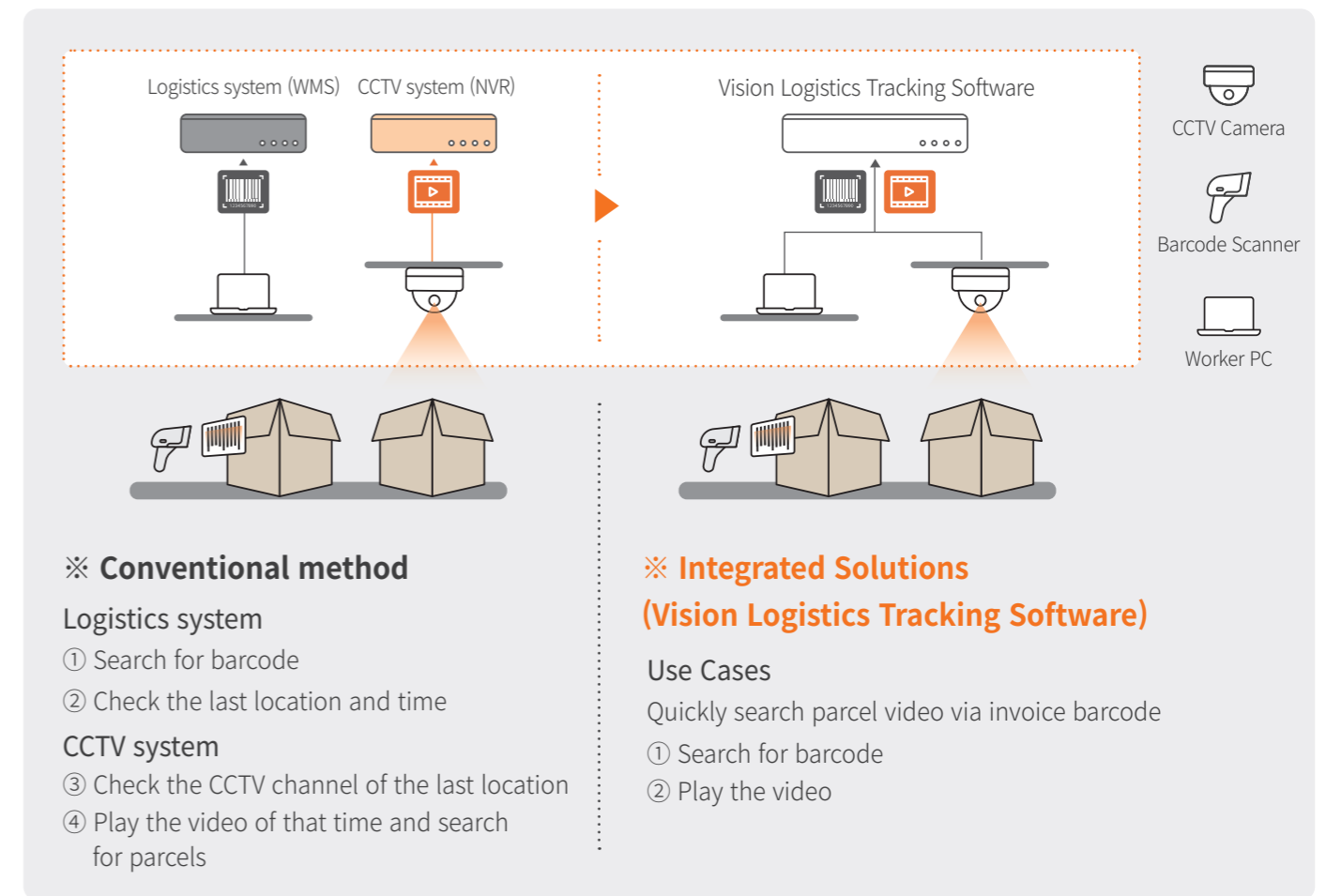
The SSM Appliance interfaces with various barcode devices to receive barcode information.



- A flexible system configuration to meet a wide range of requirements.



- Unify video and logistics systems via Vision Logistics Tracking Software to trace package history.



# Dock Safety / Management Solutions

Dock operations, including vehicle entry/exit, can be made highly efficient and safer by combining events.



## Dock Safety

AI cameras are trained to recognize certain dangerous scenes, sending an event alarm to Vision Logistics Tracking Software to prevent incidents.

### Operational Scenarios

1. Detect Person in Dock Clear Zone
2. Broadcast warning to worker (1st)
3. Detect container entry into the dock
4. Detect container + worker at the same time
5. Broadcast warning to worker/driver (2nd)
6. Worker/driver act immediately

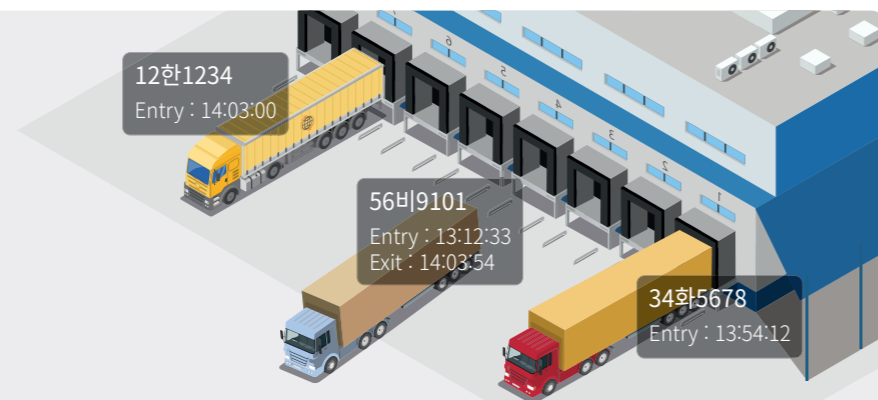
Visual warnings and audio messages are issued when people and vehicles are both detected in a defined dangerous zone.



### Dock Management

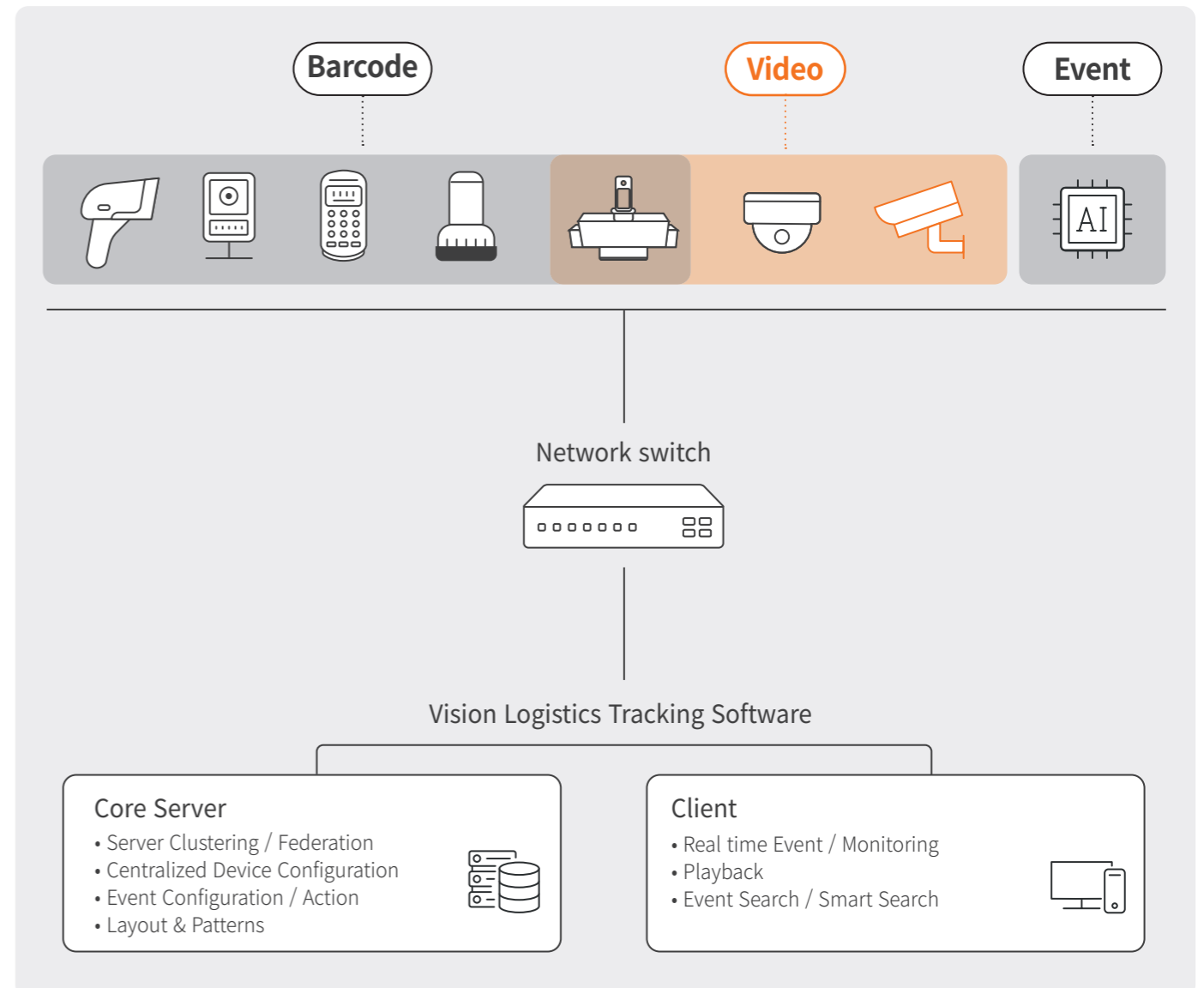
**ABC 123** **ANPR**  
Vehicle Number Recognition

**Duration**  
Event history entry / exit



# Integrated Control

Vision Logistics Tracking Software is an integrated control software platform that facilitates operations with various solutions.



# Vision Logistics Tracking Software



		XRP-4310DB4	XRP-4210B4	XRP-4110B2	XRP-4010B2
<b>Display</b>					
Network Camera	Video Input	Max 128CH (※ If clustering, 132 CH)	Max 72CH (※ If clustering, 132 CH)	Max 36CH (※ If clustering, 132 CH)	Max 16CH (※ If clustering, 132 CH)
	Resolution	CIF~32MP			
	Resolution	Wisenet, ONVIF			
Decoding	Local Display	Dual if Full HD monitor, Single if UHD monitor			
	Screen Division	1/4/9/16/25/36/49/64/72/81/100/121/132/Custom/Auto Mode			
	Resolution	1920fps@640x360 (128 division), 2160fps@720p (72 division), 1080fps@1080p (36 division)			
<b>Performance</b>					
Operating System	Embedded	Windows 10 IoT Enterprise LTSC(SSM preinstalled)			
Record	Compression	H.265, H.264, MJPEG, WiseStream(H.264, H.265)			
	Recording Bandwidth	Max 400Mbps			
	Resolution	32MP ~ CIF			
	Mode	Normal, Schedule (Continuous / Event), Event (Pre / Post), Event Profile, ARB, Dual-Track			
	Event Trigger	Video loss, Camera event(Sensor, MD, Passing, Entering, Exiting, Disappearing (Appearing), Tampering, Tracking, Face Detection, Audio Detection, ANPR, Bestshot), AI Event (Face, Appearance, Face mask, Vehicle)			
	Event Action	Instant Viewer, Preset, Alarm Out, Pop-up, Sound and E-mail notification			
Search & Play	Playback Bandwidth	Instant Viewer, Preset, Alarm Out, Pop-up, Sound and E-mail notification			
	User	Max 1024 User (132ch concurrently)	-	-	-
	Simultaneous playback	Max 128CH (※ If clustering, 132 CH)	Max 72CH (※ If clustering, 132 CH)	Max 36CH (※ If clustering, 132 CH)	Max 16CH (※ If clustering, 132 CH)
Storage	Supported HDD	SATA 6GB/s (6, 8, 10, 12, 16TB Enterprise)		SATA 6GB/s (6, 8, 10, 12TB Enterprise)	
	HDD Slot	SATA 3.5" 16ea		SATA 3.5" 8ea	
	RAID	1/5/6/10/50		1/5/6/10	
Backup	File Backup	AVI, SEC			
	Function	Manual Backup, Onetime Schedule Backup, Schedule Backup, Privacy Masking Backup			
<b>Network</b>					
Protocol	IPv4, IPv6, TCP/IP, UDP/IP, RTP(UDP), RTP(TCP), RTSP, NTP, HTTP, DHCP(Client), SMTP, ICMP, IGMP, ARP, DNS, DDNS, SNMP(Client), HTTPS, ONVI (Profile-S), SUNAPI(Client)				
DDNS	Wisenet DDNS				
Security / Viewer Software	HTTPS(SSL) Login Authentication / SSM Client, SSM Mobile				
<b>Function</b>					
Failover / ARB	Active&Active, Active-Standby / Support				
<b>Environmental</b>					
CPU	Intel Core i7-8700T		Intel Core i5-8500T		
RAM	16GB RAM				
OS HDD	M.2 SSD 128GB				
Operating Temperature/Humidity	+0°C to +40°C(+32°F to +104°F) / Less or equal to 80%				
<b>Electrical</b>					
Power Input	100 ~ 240V AC, 50 ~ 60Hz				
Power Consumption	285W Dual	285W Single	Max 180W		
Dimension (WxHxD) / Weight	440 x 132 x 548.1mm (Including Cover: 571.1mm) / 14.05kg(Excluding HDD)	440 x 132 x 548.1mm (Including Cover: 571.1mm) / 13.30kg(Excluding HDD)	438 x 86 x 434.9 mm / 9.1kg (Excluding HDD)		